

Children and Young People's Scrutiny Committee

21 March 2017

Adoption



Cllr David Mellen (Portfolio Holder, Early Years and Early Intervention)
Helen Blackman (Director – Children's Integrated Services)
Sonia Cain (Service Manager – Fostering and Adoption)



Nottingham
City Council

Adoption is a process whereby a person assumes the parenting of another, usually a child, from that person's biological or **legal** parent or parents, and, in so doing, permanently transfers all rights and responsibilities, along with filiation, from the biological parent or parents.



Nottingham
City Council

The Number of Children Adopted

- There are over 6,000 children across the UK needing adoption every year.
- There are currently 96 children in Nottingham with a plan of adoption.

2016 / 2017 - 48

2015 / 2016 - 43

2014 / 2015 - 70

2013 / 2014 - 42

2012 / 2013 - 38

2011 / 2012 - 33



Steps to Adoption

1. Initial enquiry
2. Home Visit
3. Assessment
4. Matching
5. Post Adoption Order



Support for Adoptive Parents

1. Training programme
2. The matching process
3. Financial Support
4. Educational Support
5. Post Order Support
6. Adoption Support Advisor



Outcomes for Adoption

- Outcomes for children are positive in terms of the number of children achieving adoptive homes. For the three years prior to and including the 2014-15 financial year, we were able to secure permanency through adoption for 153 children, with the majority (59%) of children adopted, falling into one or more of four hard to place categories.

LOOKED AFTER CHILDREN PERFORMANCE TABLES - ADOPTION 1

The percentage of looked after children who ceased to be looked after who were adopted

Latest data 2015

A high percentage represents high performance

Rank	LA Code	LA Name	Indicator value for the 3 year average in 2013, 2014 and 2015 (%)	Percentage of looked after children adopted during the year					Number of looked after children adopted during the year				
				2011	2012	2013	2014	2015	2011	2012	2013	2014	2015
		970 ENGLAND	16	11	13	14	17	17	3,100	3,470	4,010	5,050	5,330
30		892 Nottingham	20	12	13	17	17	25	30	30	40	43	70

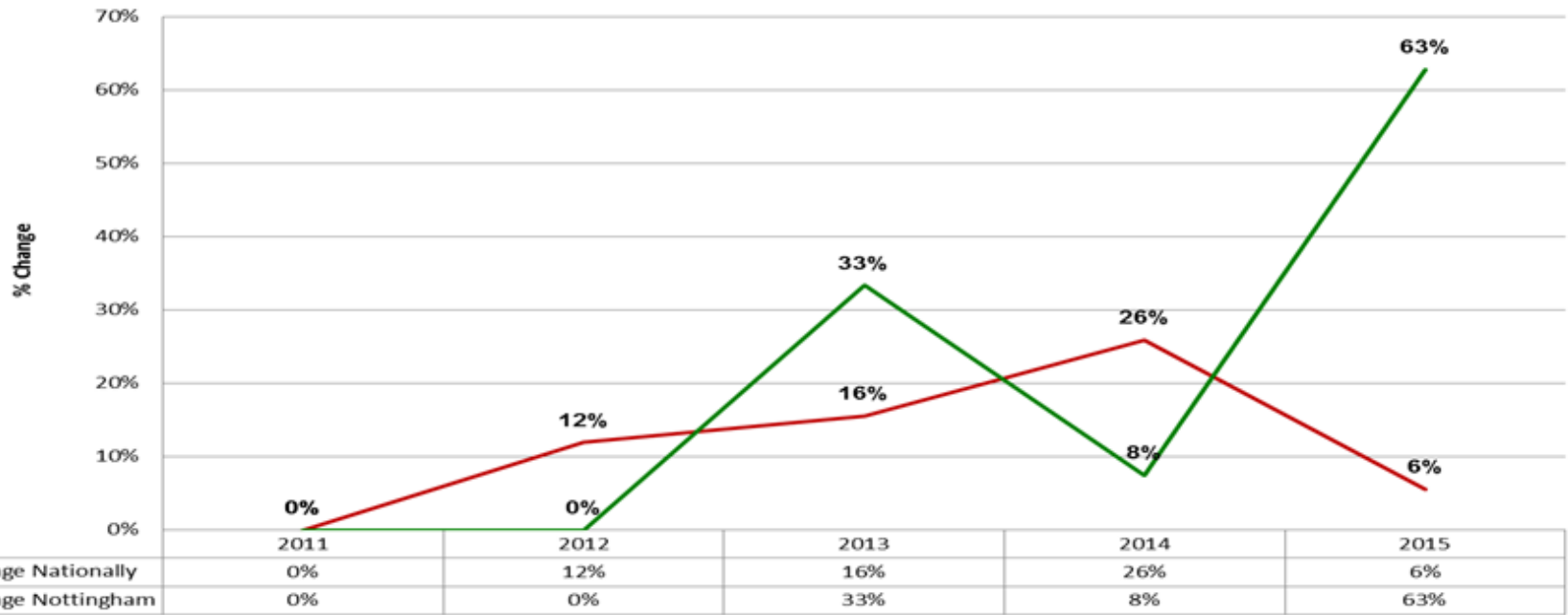
Source: S SDA 003



Nottingham
City Council

Outcomes for Adoption

The percentage change: looked after children who ceased to be looked after who were adopted year on year



Outcomes for Adoption

- Of the adoptions in the current year, 23 (64%) were for 'hard to place' children:

	Adoptions 2012-13	Adoptions 2013-14	Adoptions 2014-15	Adoptions 16/17 [To date]
	Entered Care - PFA	Entered Care - PFA	Entered Care - PFA	Entered Care - PFA
Target timescale (days)	609	547	487	426
All children	663	603	703	592
Not Hard to place	535	535	456	467
Hard to place	779	652	846	663
	Placement Order - Match	Placement Order - Match	Placement Order - Match	Placement Order - Match
Target timescale (days)	182	152	121	121
All children	249	286	387	320
Not Hard to place	167	284	206	230
Hard to place	323	288	503	370



What Ofsted said...

- Adoption is considered for all children, where appropriate, and is achieved for brothers and sisters, those who are older and for children with complex needs.
- Adopters and special guardians are comprehensively assessed and they receive appropriate support that is sensitive to their needs and the complexities of the children they care for.
- Children looked after live in stable and secure homes where they are supported to live full and enjoyable lives.
- Very careful consideration is given to children living with carers who can meet their needs. Robust quality assurance is in place to oversee and ensure the quality of both local authority placements and purchased placements.



East Midland Regional Adoption Agency 2020

- In June 2015 the government indicated its intention to reshape adoption provision into 'Regional Adoption Agencies' and sought expressions of interest from local authorities.
- The rationale was that there are currently too many adoption agencies operating. The view was that this fragmented system was leading in delays in placing children.
- The DCS's of the East Midlands agreed to work collaboratively and are due to commence a pilot.



Challenges

- Adoption Recruitment.
- Adoption Support Grant
- Timescales for Adoption.
- Legal Challenges.
- Change to interagency funding will create some pressure.



Questions



Nottingham
City Council